

MVSS 12 STAINLESS STEEL ELECTRIC VIBRATOR SERIES

three-phase

8 poles		
Hz	50	60
RPM	750	900



DESCRIPTION					MECHANICAL FEATURES						ELECTRICAL FEATURES			
Part Number	Model	Design	Frame Size	SB	Static Moment* in-lbs		Centrifugal Force lbs		Weight lbs		Power Output HP		Max Current A	
					50 Hz	60 Hz	50 Hz	60 Hz	50 Hz	60 Hz	50 Hz	60 Hz	400 V 50 Hz	460 V 60 Hz
602283	MVSS 12-90	S02	10	•	2.6	2.6	77	108	27.5	27.5	0.07	0.12	0.30	0.30
602284	MVSS 12-300	S02	10	•	7.3	7.3	207	299	34.8	34.8	0.07	0.12	0.30	0.30
602285	MVSS 12-580	S02	20	•	14.2	14.2	403	581	49.5	49.5	0.13	0.16	0.50	0.50
602405	MVSS 12-750	S08	30	•	24.9	18.2	706	744	70.4	67.5	0.29	0.36	0.72	0.68
602287	MVSS 12-1630	S02	35	•	39.7	39.7	1126	1621	95.7	95.7	0.32	0.36	0.75	0.68
602408	MVSS 12-1990	S08	40	•	62.9	48.8	1780	1991	119	116	0.60	0.69	1.40	1.35
602409	MVSS 12-2530	S08	50	•	88.0	62.2	2490	2532	147	131	0.74	0.75	1.65	1.50
602410	MVSS 12-3100	S08	50	•	111	78.6	3133	3263	172	156	0.87	0.87	1.80	1.70
602411	MVSS 12-3410	S08	60	•	143	83.6	3604	3408	207	183	1.10	1.30	2.20	2.20
602412	MVSS 12-4700	S08	60	•	168	115	4739	4624	231	205	1.50	1.60	3.00	2.75
602293	MVSS 12-6050	S02	70	•	202	148	5722	6043	286	255	2.10	2.30	4.10	3.75
602294	MVSS 12-6600	S02	70	•	234	169	6615	6873	319	286	2.30	2.70	4.50	4.30

Approval for European Directive 94/9/EC: ATEX II2D, tD A21 IP66, available upon request.

All listed products are in compliance with GOST R 50615, GOST 17770, GOST 12.2.030, GOST R 51318.14.1-14.2, GOST R 51317.3.2-3.3.

In compliance with all applicable European Directives.

MVSS 9 STAINLESS STEEL ELECTRIC VIBRATOR SERIES

three-phase

8 poles		
Hz	50	60
RPM	750	900

DESCRIPTION					MECHANICAL FEATURES						ELECTRICAL FEATURES			
Part Number	Model	Design	Frame Size	SB	Static Moment* in-lbs		Centrifugal Force lbs		Weight lbs		Power Output HP		Max Current A	
					50 Hz	60 Hz	50 Hz	60 Hz	50 Hz	60 Hz	50 Hz	60 Hz	400 V 50 Hz	460 V 60 Hz
602561	MVSS 9-340	S02	20	•	14.2	14.2	229	328	49.5	49.5	0.15	0.20	0.85	0.76
602617	MVSS 9-570	S08	30	•	24.9	24.9	398	572	70.4	70.4	0.25	0.28	1.10	1.05
602563	MVSS 9-910	S02	35	•	39.7	39.7	634	913	95.7	95.7	0.19	0.20	0.60	0.68
602620	MVSS 9-1440	S08	40	•	62.9	62.9	1003	1443	119	119	0.28	0.35	1.20	1.20
602621	MVSS 9-2020	S08	50	•	88.0	88.0	1401	2017	147	147	0.29	0.40	1.40	1.30
602622	MVSS 9-2920	S08	60	•	127	127	2028	2919	207	207	0.87	1.10	2.20	2.20
602567	MVSS 9-4640	S02	70	•	202	202	3219	4635	286	286	1.4	1.8	4.10	4.20

* Working Moment = 2 x Static Moment. Static Moment = Unbalance.
For 230 V, 60 Hz amperage, double the 460 V, 60 Hz amperage.

MVSS 12 STAINLESS STEEL ELECTRIC VIBRATOR SERIES

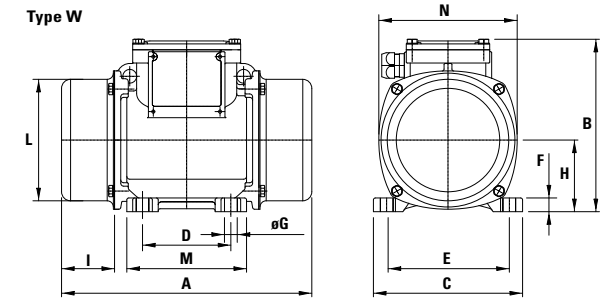
three-phase

8 poles		
Hz	50	60
RPM	750	900



OVERALL DIMENSIONS (inches)															
Model	Design	Type	A	B	C	D	E	Foot holes		F	H	I	L	M	N
								øG	N°						
MVSS 12-90	S02	W	10.04	6.93	5.98	3.54	4.92	0.51	4	0.47	2.87	2.13	4.88	4.80	5.55
MVSS 12-300	S02	W	11.61	6.93	5.98	3.54	4.92	0.51	4	0.47	2.87	2.91	4.88	4.80	5.55
MVSS 12-580	S02	W	13.39	7.87	6.57	4.13	5.51	0.51	4	0.59	3.25	3.58	5.63	5.39	6.30
MVSS 12-750	S08	W	14.88	8.07	8.07	4.72	6.69	0.67	4	0.67	3.68	3.86	6.61	6.30	7.17
MVSS 12-1630	S02	W	17.09	9.13	8.07	4.72	6.69	0.67	4	0.79	4.11	4.61	7.13	6.38	7.99
MVSS 12-1990	S08	W	19.29(50Hz) 17.40(60Hz)	9.65	9.06	5.51	7.48	0.67	4	0.98	4.57	5.08(50Hz) 4.13(60Hz)	7.91	7.09	8.86
MVSS 12-2530	S08	W	22.05	9.65	9.06	5.51	7.48	0.67	4	0.98	4.57	6.46	7.91	7.09	8.86
MVSS 12-3100	S08	W	22.05	9.65	9.06	5.51	7.48	0.67	4	0.98	4.57	6.46	7.91	7.09	8.86
MVSS 12-3410	S08	W	23.66(50Hz) 20.67(60Hz)	11.22	10.83	6.10	8.86	0.87	4	1.18	5.31	6.65(50Hz) 5.16(60Hz)	9.09	8.07	9.96
MVSS 12-4700	S08	W	23.66	11.22	10.83	6.10	8.86	0.87	4	1.18	5.31	6.65	9.09	8.07	9.96
MVSS 12-6050	S02	W	25.87(50Hz) 23.19(60Hz)	12.72	12.20	6.10	10.04	0.93	4	1.38	6.10	6.83(50Hz) 5.49(60Hz)	10.59	8.46	11.61
MVSS 12-6600	S02	W	27.76	12.72	12.20	6.10	10.04	0.93	4	1.38	6.10	7.78	10.59	8.46	11.61

Type W



MVSS 9 STAINLESS STEEL ELECTRIC VIBRATOR SERIES

three-phase

8 poles		
Hz	50	60
RPM	750	900

OVERALL DIMENSIONS (inches)															
Model	Design	Type	A	B	C	D	E	Foot holes		F	H	I	L	M	N
								øG	N°						
MVSS 9-340	S02	W	13.39	7.87	6.57	4.13	5.51	0.51	4	0.59	3.25	3.58	5.63	5.39	6.30
MVSS 9-570	S08	W	14.88	8.07	8.07	4.72	6.69	0.67	4	0.67	3.68	3.86	6.61	6.30	7.17
MVSS 9-910	S02	W	17.09	9.13	8.07	4.72	6.69	0.67	4	0.79	4.11	4.61	7.13	6.38	7.99
MVSS 9-1440	S08	W	19.29	9.65	9.06	5.51	7.48	0.67	4	0.98	4.57	5.08	7.91	7.09	8.86
MVSS 9-2020	S08	W	22.05	9.65	9.06	5.51	7.48	0.67	4	0.98	4.57	6.46	7.91	7.09	8.86
MVSS 9-2920	S08	W	23.66	11.22	10.83	6.10	8.86	0.87	4	1.18	5.31	6.65	9.09	8.07	9.96
MVSS 9-4640	S02	W	25.87	12.72	12.20	6.10	10.04	0.93	4	1.38	6.10	6.83	10.59	8.46	11.61

* Working Moment = 2 x Static Moment. Static Moment = Unbalance.
For 230 V, 60 Hz amperage, double the 460 V, 60 Hz amperage.